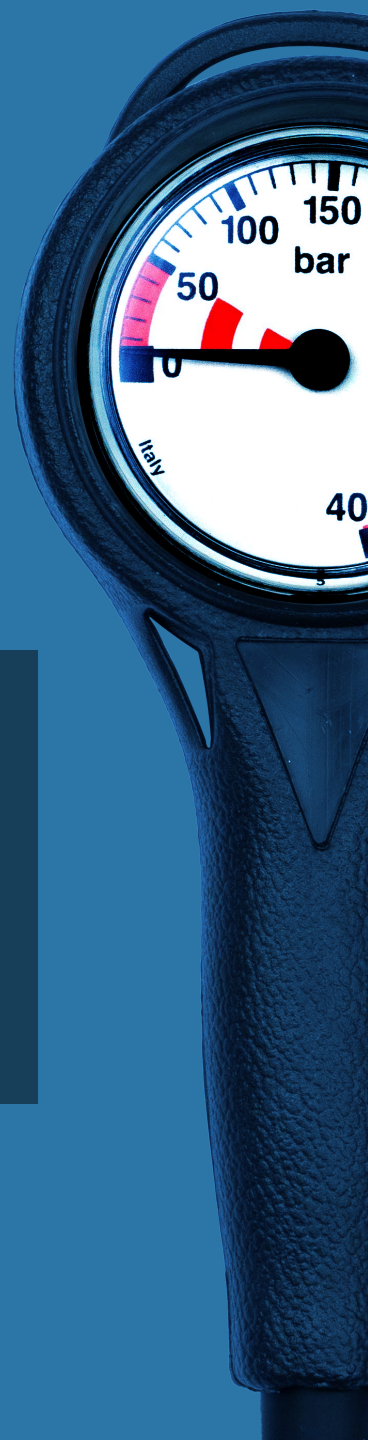
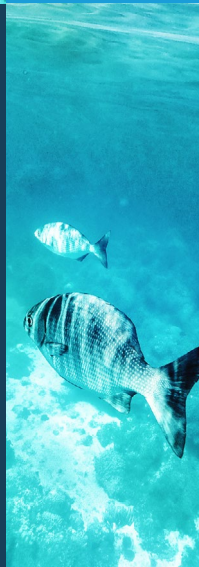


TERMO  INDUSTRIA

Manufacturing gauges  
since 1934.



Product  
catalogue







## Index

Welcome to our catalogue. Here you will find detailed info, list of products including our contact section at the end.

p. 3

## History

A section where you can learn about our history, values and brand pillars, our work and ethics.

p. 4

## Products

A detailed list of our product, including descriptions and technical specifications.

p. 7

## Contacts

A page where you can find useful information to contact us.

p. 76

# We are Termo Industria.

A leading manufacturer of scuba diving instruments, Termo Industria s.r.l. was established over a century ago.

Originally producing pressure gauges and thermometers, today we manufacture a range of scuba gear that also includes depth gauges, combo consoles and compasses, as well as spare parts, including HP hoses, Miflex hoses, dials and more.

Our fourth-generation, family-run business prides itself on the quality of our analog gauges and diving instruments: the combination of 100 years of gauge-making expertise and our passion for scuba diving results in diving instruments that is tried and trusted by recreational divers, technical divers and leading brands alike.

At Termo Industria, we rely on our extensive experience, which we have been expanding on since the pioneering years of scuba diving. Along with our interest in modern innovations and technology, our profound knowledge of diving means we understand the demands of

today's scuba diver, and the need for faultless precision, reliability and value in their scuba gear.

In testament to our diving instrument's reliability, our underwater pressure gauges are **certified according to EN250:2014 (+ EN13949:2003 for O<sub>2</sub> versions) and European Regulation 2016/425 and our depth gauges according to EN13319.**

In addition to submersible and professional compasses, thermometers, pressure gauges and depth gauges, Termo Industria also manufactures a range of combo consoles, featuring a range of different combinations of analog gauges and compasses – every diver is sure to find their ideal dive console among them.

Here at Termo Industria, we are proud to continue providing divers worldwide with exceptional dive gear and we hope you enjoy diving with it as much as we do.



## Our history

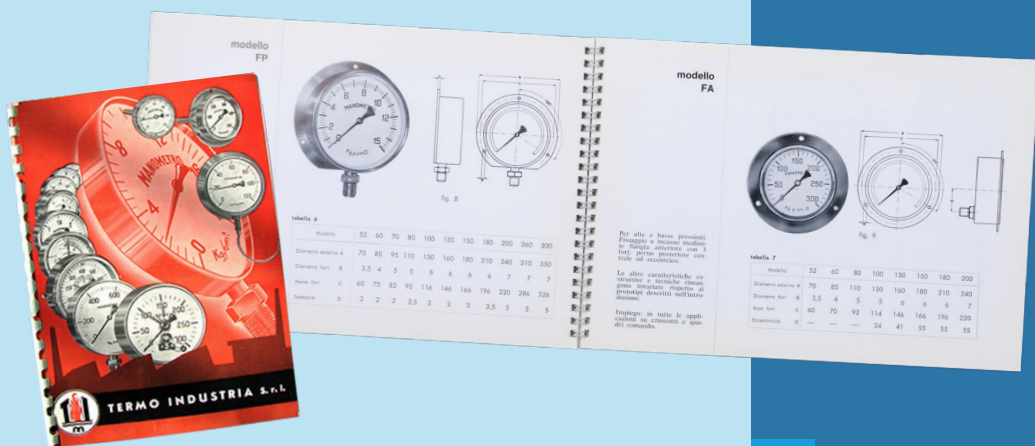
1934

1940

1950

1960

1970



Historical documents







## Products

# A range of products, for all our customers' needs.

### Submersible Pressure Gauge,

also known simply as SPG, is an essential piece of dive gear for any scuba diver.

The ideal pressure gauge is lightweight, ergonomic and simple to use, providing the diver with a clear, accurate reading of how much air is left in their tank to ensure they end their dive before their air supply runs too low. Our gauges are suitable for recreational and technical divers and are renowned for their high-quality and ease of use.

**Depth Gauges**, also known simply as a depth meter or scuba depth gauges, helps divers track how far they are below the surface. They are 100% Made in Italy and are made with the best quality materials and

are also extremely precise and accurate. The design is made to give you a clear visibility reading while the mechanical technology allows you to forget when to change the batteries.

**Combo products.** Our consoles are easy to handle, ergonomic and allow you to have multiple gauges at the same time, offering multiple combinations among SPGs, MDIs and Compasses.

**Our compass** range provides divers with a reliable and accurate indication of their direction. It helps them navigate through complex dive sites, follow underwater maps, and locate specific points of interest, such as wrecks, caves, and coral reefs. In addition to indicating directions, dive compasses also enhance safety: with a good dive compass, divers can confidently explore while minimising the risk of getting lost.

**Our spare parts** section provides a wide selection of accessories for scuba diving including maintenance tools, hooks, covers, hoses, dials and needles.



pressure  
gauge



depth  
gauge



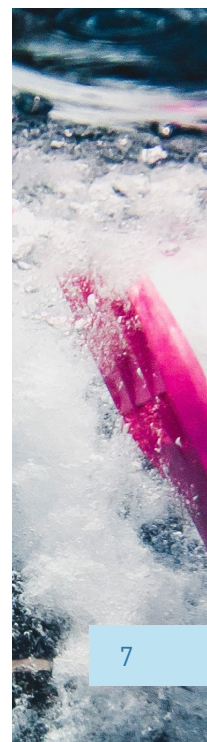
combo



compass



spare  
parts



# Diving pressure gauges.

### A Submersible Pressure

Gauge (SPG) is an essential piece of dive gear for any scuba diver.

Available as a stand-alone instrument or as part of a combo diving console, the ideal pressure gauge is lightweight, ergonomic and simple to use, providing the diver with a clear, accurate reading of how much air is left in their tank to ensure they end their dive before their air supply runs too low.

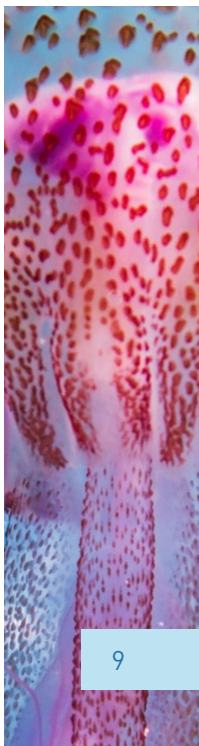






Pressure  
gauges  
specifically  
designed to  
safeguard  
the safety  
of our  
divers.

Our gauges are suitable for recreational and technical divers and are renowned for their high-quality and ease of use. We manufacture high-quality and reliable Pressure Gauges made from a solid brass housing. Each model is precisely manufactured and tested according to **EN 250:2014 or EN 250:2014 + EN 13949:2003 (O<sub>2</sub> versions)** and to European Regulation 2016/425.



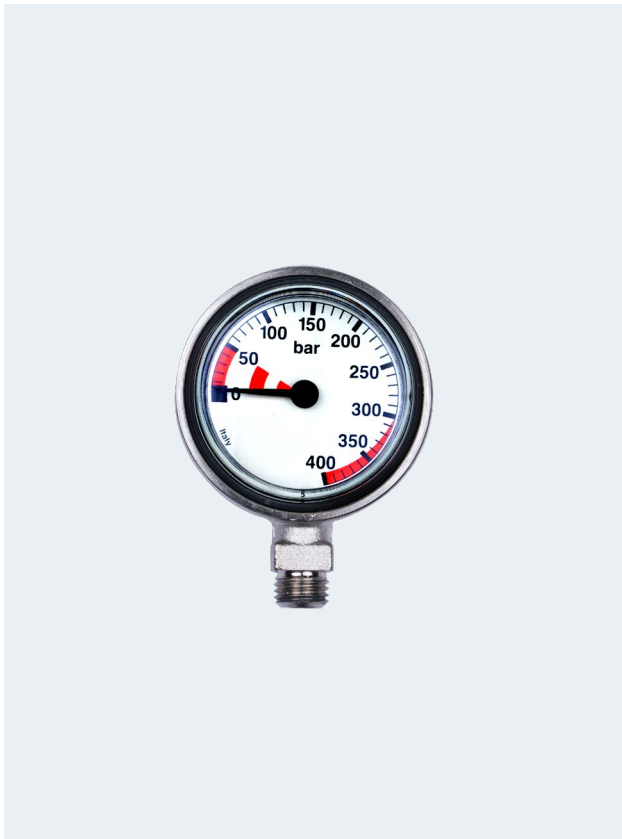
# Submersible pressure gauges.

We manufacture high-quality and reliable Pressure Gauges made from a solid brass housing.

Our gauges are available in different combinations and with many extras, such as several ranges of BAR/PSI or double scale, personalized dials, various coating (Nickel, Chrome & PVD), Tempered Glass, HP hose & Miflex hose (varying length) but also various boot styles, colors, preparation for nitrox use and much more.







2K LINE SPG - Capsule only  
**Cat. T.I. 130012**



2K LINE SPG - Very low profile  
**Cat. T.I. 130013**

## 2K LINE SPG SERIES

### Description and material

- All one piece nickel-plated brass body
- Copper beryllium spiral wound
- Luminescent and easy-to read dial
- Polycarbonate transparent window
- Lighter and more compact than the regular pressure gauges

### Graduations

Metric: 0-400 bar

Imperial: 0-5000 psi

- Also available with double scale
- Increments of 10 bar / 100 psi all over the scale
- Red mark in the reserve zone in the last 50 bar

### Options

- Black dial with fluorescent numbers and needle available on request
- Standard Thermoplastic Hose 80 cm (32")  
**Cat. T.I. 130013**
- Short Thermoplastic Hose 15 cm (6")  
**Cat. T.I. 130013/SHP**
- Also available with Miflex Hose  
**Cat. T.I. 130013/MFX**
- Available with Hose Protector
- Variuos hose lengths on request starting from 15 cm
- Capsule only  
**Cat. T.I. 130012**

**Manufactured in Italy and certified according to EN250:2014 & European Regulation 2016/425.**

### Weight

Complete: 275 g / 9.70 oz

Capsule: 105 g / 3.70 oz

### Size

Diam. 50 mm / 2"



2K LINE SPG - Oxygen / Nitrox  
Cat. T.I. 130014

## 2K LINE SPG - OXYGEN / NITROX

### Description and material

This model matches the same specifications and options of the 2K LINE SPG with the possibility of nitrox and enriched oxygen mixtures use.

- Green cover with loop for firxing
- Luminescent dial with O<sub>2</sub>

### Graduations

Metric: 0-400 bar

Imperial: 0-5000 psi

- Increments of 10 bar / 100 psi all over the scale

### Options

- Black dial with fluorescent numbers and needle available on request
- Available with Hose Protector

**Manufactured in Italy and certified according to EN 250:2014 + EN 13949:2003 (O<sub>2</sub> versions).**

### Weight

300 g / 10.5 oz

### Size

Diam. 50 mm / 2"







SPG 2010 2K Series  
Cat. T.I. 130038



SPG 2010 2K Series  
Cat. T.I. 130038/W

## SPG 2010 2K SERIES

### Description and material

- All one piece nickel-plated brass body
- Copper beryllium spiral wound
- Luminescent and easy-to read dial
- Polycarbonate transparent window
- Lighter and more compact than the regular pressure gauges

### Graduations

Metric: 0-400 bar

Imperial: 0-5000 psi

- Also available with a double scale
- Increments of 10 bar / 100 psi all over the scale
- Red mark in the reserve zone in the last 50 bar

### Options

- Black dial with fluorescent numbers and needle available on request

**Cat. T.I. 130038/Bdial**

- Standard Thermoplastic Hose 80cm (32")

**Cat. T.I. 130038**

- Short Thermoplastic Hose 15 cm (6")

**Cat. T.I. 130038/SHP**

- Also available with Miflex Hose

**Cat. T.I. 130038/MFX**

- Available with Hose Protector
- Variuos hose lengths on request starting from 15 cm
- Capsule only

**Cat. T.I. 130012**

- Available also in "Total White Look" (Cover + Hose)

**Cat. T.I. 130038/W**

**Manufactured in Italy and certified according to EN250:2014 & European Regulation 2016/425.**

### Weight

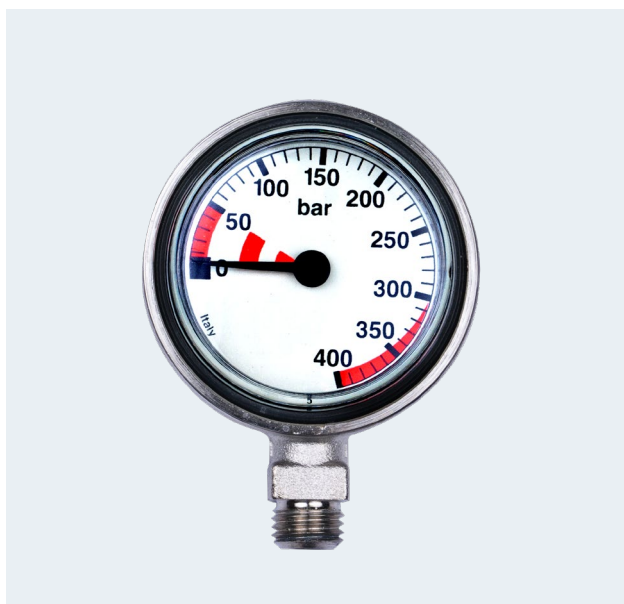
273 g / 9.67 oz

### Size

Diam. 50 mm / 2"



EVO LINE SPG  
Cat. T.I. 130013/E



EVO LINE SPG (capsule only)  
Cat. T.I. 130012

## EVO LINE SPG

### Description and material

With a brand new design, the EVO LINE is the third generation of SPG mini line gauge boot. Thanks to a special processing of the mold, the EVO LINE cover is much more softer and comfortable, but at the same time, it has a higher grip and a stronger impact resistance. The EVO LINE is very easy to read and its rounded profile brings out its ergonomic shape and exalts its proficiency.

### Graduations

Metric: 0-400 bar

Imperial: 0-5000 psi

- Also available with a double scale
- Increments of 10 bar / 100 psi all over the scale
- Red mark in the reserve zone in the last 50 bar

### Options

- Black dial with fluorescent numbers and needle available on request
- Also available with Miflex Hose
- Available with Hose Protector
- Variuos hose lengths on request starting from 15 cm
- Capsule only

**Cat. T.I. 130012**

**Manufactured in Italy and certified according to EN250:2014 & European Regulation 2016/425.**

### Weight

279 g / 9.84 oz

### Size

Diam. 50 mm / 2"





CE SPG Large size: **Cat. T.I. 130036/L**

CE SPG Small size: **Cat. T.I. 130036/S**



CE SPG Large "Capsule": **Cat. T.I. 130036/L/CPS**

CE SPG Small "Capsule": **Cat. T.I. 130036/S/CPS**

## CE TYPE Large & small size

### Description and material

- Nickel plated brass housing
- Copper beryllium bourdon tube mechanism and silver welding
- Luminescent and easy-to read dial
- Built-in over pressure relief for safety
- Cover with loop for fixing
- Thermoplastic HP Hose

### Graduations

Metric: 300 bar, 360 bar, 400 bar, 450 bar

Imperial: 5000 psi, 5500 psi

- Also available with a double scale
- Increments of 10 bar / 100 psi all over the scale
- Red mark in the reserve zone in the last 50 bar

### Options

- Black dial with fluorescent numbers and needle available on request
- Polycarbonate or Tempered Glass
- Thermometer on dial
- Variuos hose lengths on request starting from 15 cm
- Also available with Miflex Hose
- Available with Hose Protector
- Capsule only:
  - Large (63 mm / 2.5") **Cat. T.I. 130036/L/CPS**
  - Small (52 mm / 2") **Cat. T.I. 130036/S/CPS**

**Manufactured in Italy and certified according to EN250:2014 & European Regulation 2016/425.**

### Weight

Complete

- Large 439 g / 15.49 oz
- Small 389 g / 13.72 oz

### Size

Diam. 63 mm / 2.5"

Diam. 52 mm / 2"

Capsule

- Large 240 g / 8.47 oz
- Small 194 g / 6.84 oz



CE TYPE small size - Oxygen / Nitrox  
Cat. T.I. 130015

## CE TYPE SMALL SIZE - OXYGEN /NITROX

### Description and material

This model matches the same specifications and options of the CE TYPE with the possibility of nitrox and enriched oxygen mixtures use.

- Green cover with loop for fixing
- Luminescent dial with O<sub>2</sub>

### Options

- Available with Hose Protector

**Manufactured in Italy and certified according to EN 250:2014 + EN 13949:2003 (O<sub>2</sub> versions).**

### Weight

389 g / 13.72 oz

### Size

Diam. 52 mm / 2"







SPG 2006  
Cat. T.I. 130037

## SPG 2006

### Description and material

- Nickel plated brass housing
- Copper beryllium bourdon tube mechanism and silver welding
- Luminescent and easy-to read dial
- Built-in over pressure relief for safety
- Cover with loop for fixing
- Thermoplastic HP Hose

### Graduations

Metric: 300 bar, 360 bar, 400 bar, 450 bar  
Imperial: 5000 psi, 5500 psi

- Also available with a double scale
- Increments of 10 bar / 100 psi all over the scale
- Red mark in the reserve zone in the last 50 bar

### Options

- Polycarbonate or Tempered Glass
- Thermometer on dial
- Various hose lengths on request starting from 15 cm
- Available with Hose Protector
- Also available with Miflex Hose

**Manufactured in Italy and certified according to EN250:2014 & European Regulation 2016/425.**

### Weight

423 g / 14.92 oz

### Size

Diam. 63 mm / 2.5"





SPG TECH GAUGE - Large size  
Nickel Plated: **Cat. T.I. 130039/N/L**



SPG TECH GAUGE - Small size  
Chrome Plated: **Cat. T.I. 130039/DC/S**

## SPG TECH GAUGE Large & small size

### Description and material

Studied for technical divers, DIR philosophy training, and top-quality regulators, the SPG TECH GAUGE ensures the highest accuracy and reliability.

Its tempered glass, the double welding, and the copper beryllium bourdon tube mechanism guarantee maximum durability and never go out of calibration even with hard shock.

Available with Nickel or Chrome treatment ensures maximum protection against corrosion.

### Graduations

Metric: 300 bar, 360 bar, 400 bar, 450 bar

Imperial: 5000 psi, 5500, psi

- Also available with a double scale

### Options

- Black dial with fluorescent numbers and needle available on request
- Oxygen clean on demand
- Laser engraved specifications according to EN 250

Nickel Plated brass housing:

- Diam. 52 mm / 2" **Cat. T.I. 130039/N/S**
- Diam. 63 mm / 2.5" **Cat. T.I. 130039/N/L**

Double Mirror Chrome Plated brass housing:

- Diam. 52 mm / 2" **Cat. T.I. 130039/DC/S**
- Diam. 63 mm / 2.5" **Cat. T.I. 130039/DC/L**

**Manufactured in Italy and certified according to EN250:2014 & European Regulation 2016/425.**

### Weight

Capsule

- Large 244 g / 8.61 oz
- Small 203 g / 7.16 oz

### Size

Diam. 63 mm / 2.5"

Diam. 52 mm / 2"





SPG TECH GAUGE, PVD - Small size  
**Cat. T.I. 130039/PVD/S (Black)**



**Cat. T.I. 130039/PVD/S (White)**



Spg Tech gauge, PVD - Large size  
**Cat. T.I. 130039/PVD/L**

## SPG TECH GAUGE - PVD

### Description and material

This gauge is different from the standard SPG due to the NEW PVD TREATMENT over the double chrome mirror plating of the case, to ensure the best looking and maximum protection against corrosion, in fact PVD is 300 times harder than chrome. Brass housing with tempered glass gives extreme durability and chance to use with no cover protection due to double welding and copper beryllium bourdon tube mechanism that never goes out of calibration even with hard shock.

The gauge is used often in technical diving and has a high level of accuracy and reliability.

Preferred for its simplicity by many technical divers or divers who follow the DIR training philosophy.

### Graduations

Metric: 300 bar, 360 bar, 400 bar, 450 bar

Imperial: 5000 psi, 5500 psi

- Also available in a double scale

### Options

- Black dial with fluorescent numbers and needle available on request
- Oxygen clean on demand
- Laser engraved specifications according to EN 250

SPG Tech Gauge - PVD treated:

- Diam. 52 mm / 2" **Cat. T.I. 130039/PVD/S**
- Diam. 63 mm / 2.5" **Cat. T.I. 130039/PVD/L**

**Manufactured in Italy and certified according to EN250:2014 & European Regulation 2016/425.**

### Weight

Capsule

- Large 244 g / 8.61 oz
- Small 203 g / 7.16 oz

### Size

Diam. 63 mm / 2.5"

Diam. 52 mm / 2"



## CERAKOTE SPG

### Description and material

Cerakote is generally used on guns & rifles for extending their longevity and is a specialized coating composed of a polymer-ceramic compound that provides and enhances physical components including:

- Providing abrasion, corrosion, and chemical resistance
- Improving strength and durability

The ceramic composite crafts a solid finish that is hard so if dropped it can withstand impacts scratches and dings.

Cerakote is a great finish to give both a nice look and a durability upgrade.

### Graduations

Metric: 300 bar, 360 bar, 400 bar, 450 bar

Imperial: 5000 psi, 5500 psi

- Also available with a double scale

### Options

- RED Cat. T.I. 130055/S/RD
- GREEN Cat. T.I. 130055/S/GN
- YELLOW Cat. T.I. 130055/S/YL
- BLUE Cat. T.I. 130055/S/BL
- Black dial with fluorescent numbers and needle available on request
- Oxygen clean on demand
- Stainless-steel or black PVD ring
- Laser engraved specifications according to EN 250

**Manufactured in Italy and certified according to EN250:2014 & European Regulation 2016/425.**

### Weight

203 g / 7.16 oz

### Size

Diam. 52 mm / 2"





BRASS SNAP SPG - Capsule only  
**Cat. T.I. 130004**

## BRASS SNAP SPG

### Description and material

- Nickel-plated brass housing with tempered glass lens
- Copper beryllium bourdon tube mechanism and silver welding
- Luminescent dial
- Built-in over pressure relief for safety

### Graduations

Metric: 300 bar, 360 bar, 400 bar  
Imperial: 5000 psi, 5500 psi

- Also available with a double scale

### Options

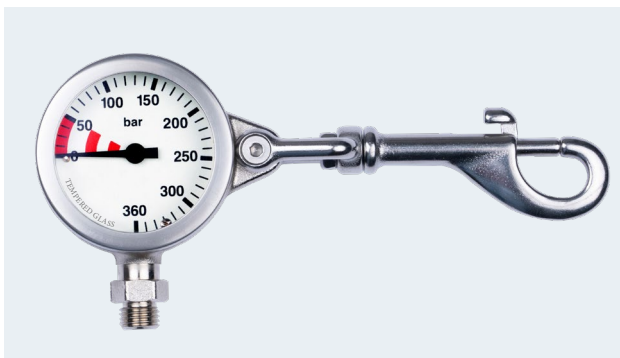
- Black dial with fluorescent numbers and needle available on request

### Weight

208 g / 7.34 oz

### Size

Diam. 52 mm / 2"



BRASS SNAP SPG + Stainless steel shackle  
**Cat. T.I. 130004/a**

## BRASS SNAP SPG + STAINLESS STEEL SHACKLE

### Description and material

Brass Snap SPG is combined with a stainless steel shackle bolt snap.

### Weight

273 g / 9.63 oz









# Submersible Depth Gauges

Depth Gauges, also known simply as depth meters or scuba depth gauges, help divers track how far they are below the surface.

All our depth gauges are made with the best quality materials and are also extremely precise and accurate.

The design is made to give you a clear visibility reading with a phosphorescent dial face and functionality while maintaining a certain cosmetic aesthetic and features a red, maximum depth indicator that is easy to reset in preparation for your next dive.

The mechanical design of these gauges also means there is no need to remember to change the batteries. Depth gauges can be sold separately or fitted into combos.

Depth  
gauges:  
ready  
to assist  
you in any  
underwater  
situation  
with their  
real-time,  
accurate  
data.





2K LINE MDI DEPTH GAUGE,  
Wrist Cover Complete: **Cat. T.I. 130006**



2K LINE MDI DEPTH GAUGE - Capsule only  
**Cat. T.I. 130007**

## 2K LINE MDI DEPTH GAUGE Wrist model

### Description and material

- Very compact and lightweight
- Phosphor Bronze C Bourdon tube
- Silicone oil-filled
- Polycarbonate upper part
- Luminous easy-to-read dial design
- Maximum depth red indicator easy to reset

Highly accurate in a range between  
0° C to 50° C degrees / 32° F to 130° F degrees.

### Graduations

Metric: 0-70 m (full scale)

Imperial: 0-220 ft (full scale)

- Increments of 1 m / 5 ft all over the scale
- Red marking: 3-6 m / 10-20 ft
- Also available with a double scale

**Accuracy to DIN EN 13319.**

### Options

- Wrist Model  
**Cat. T.I. 130006**
- Capsule only  
**Cat. T.I. 130007**
- Black dial with fluorescent numbers and needle  
available on request

### Weight

Wrist Model:  
134 g / 4.73 oz

Capsule only:  
80 g / 2.82 oz

### Size

Diam. 50 mm / 2"





MDI DEPTH GAUGE - Wrist Model  
**Cat. T.I. 130040**

## MDI DEPTH GAUGE Wrist model

### Description and material

- Copper Beryllium diaphragm
- 340° degrees scale with wide reading in the first half of the scale
- Adjustable screw for diving in altitude
- Luminous easy-to-read dial design
- Maximum depth red indicator easy to reset

### Graduations

Metric: 0-50 m\*, 0-70 m\*, 0-80 m\*

Imperial: 0-160 ft\*, 0-220 ft\*, 0-230 ft\*

\* (full scale)

- Increments of 1 m / 5 ft
- Also available with a double scale

**Accuracy to DIN EN 13319.**

### Options

- Wrist Model  
**Cat. T.I. 130040**
- Capsule only  
**Cat. T.I. 130040/C**
- Black dial with fluorescent numbers and needle available on request



MDI DEPTH GAUGE - Capsule only  
**Cat. T.I. 130040/C**

### Weight

Wrist Model:  
141 g / 5 oz

Capsule only:  
85 g / 3 oz

### Size

Diam. 63 mm / 2.5"



DEPTH GAUGE, MILITARY MODEL, Yellow dial:  
**Cat. T.I. 130041/Y**



DEPTH GAUGE, MILITARY MODEL, Black dial:  
**Cat. T.I. 130041/B**

## MDI DEPTH GAUGE MILITARY MODEL Wrist model

### Description and material

- Copper Beryllium diaphragm
- 40° degrees scale with wide reading in the first half of the scale
- Adjustable screw for diving in altitude
- Luminous easy to read dial design
- Maximum depth red indicator easy to reset

### Graduations

Metric: 0-25 m (full scale)

Imperial: 0-80 ft (full scale)

- Increments of 1 m / 5 ft

### Tolerance:

1,5% 0 - 10 m / 0 - 40 ft

3% 10 - 25 m / 40 - 80 ft

**Accuracy to DIN EN 13319.**

### Options

- Also available with black dial with fluorescent numbers and needle

**Cat. T.I. 1300041/B**

- Yellow dial

**Cat. T.I. 130040/Y**

- Black dial

**Cat. T.I. 130040/B**

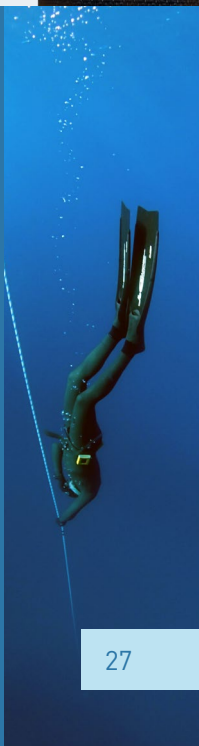
### Weight

141 g / 5 oz

### Size

Diam. 63 mm / 2.5"











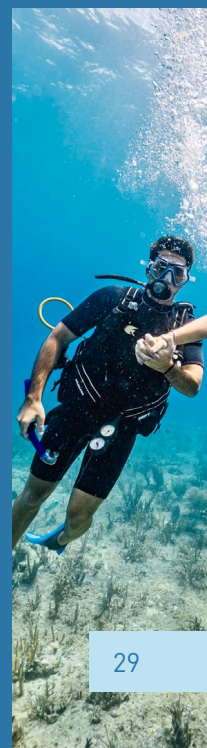
The best  
of all our  
features -  
combined  
together  
in one  
powerful  
tool.

## Combo Consoles

Combo-Console are specifically bespoke combinations, particularly appreciated by technical and sports divers worldwide.

All the Combo-Console products have the following directives and specifications:

- SPG + HP hose in compliance with EN 250:2014 specifications and depth gauge to EN 13319.
- Available in bar/m, psi/ft or with a double scale.
- Suggested use only by individuals trained and certified by a recognized Scuba Training Agency.





COMBO 2K SPG + MDI  
Cat. T.I. 130026

## COMBO 2K SPG + MDI

### Description and material

2 gauge console:

- Pressure gauge
- Depth gauge in-line

**MDI** features as **Cat. T.I. 130007**

**SPG** features as **Cat. T.I. 130012**

### Graduations

Metric: 400 bar - 70 m

Imperial: 5000 psi - 220 ft

- Also available with a double scale
- Increments of 10 bar / 100 psi and 1 m / 5 ft all over the scale

### Options

- Black dial with fluorescent numbers and needle available on request
- Standard Thermoplastic Hose 80 cm (32")  
**Cat. T.I. 130026**
- Also available with Miflex Hose  
**Cat. T.I. 130026/MFX**
- Available with Hose Protector
- Various hose lengths on request starting from 15 cm

### Weight

389 g / 13.72 oz

### Size

SPG: diam. 50 mm / 2"

MDI: diam. 50 mm / 2"





COMBO 2K SPG + MDI + 2K COMPASS  
**Cat. T.I. 130027**



## COMBO 2K SPG + MDI + 2K COMPASS

### Description and material

3 gauge console:

- Pressure gauge
- Depth gauge on the front
- Compass on the back

**Compass** features as **Cat. T.I. 130010**

**MDI** features as **Cat. T.I. 130007**

**SPG** features as **Cat. T.I. 130012**

### Graduations

Metric: 400 bar - 70 m

Imperial: 5000 psi - 220 ft

- Also available with a double scale
- Increments of 10 bar / 100 psi and 1 m / 5 ft all over the scale

### Options

- Black dial with fluorescent numbers and needle available on request
- Standard Thermoplastic Hose 80cm (32")  
**Cat. T.I. 130027**
- Also available with Miflex Hose  
**Cat. T.I. 130027/MFX**
- Available with Hose Protector
- Various hose lengths on request starting from 15 cm

### Weight

422 g / 14.92 oz

### Size

SPG: diam. 50 mm / 2"

MDI: diam. 50 mm / 2"

Compass: 50 mm / 2"



COMBO 2K SPG + 2K COMPASS  
Cat. T.I. 130025



## COMBO 2K SPG + 2K COMPASS

### Description and material

2 gauge console:

- Pressure gauge
- Compass in-line

**Compass** features as **Cat. T.I. 130010**

**SPG** features as **Cat. T.I. 130012**

### Graduations

Metric: 400 bar

Imperial: 5000 psi

- Also available with a double scale
- Increments of 10 bar / 100 psi all over the scale

### Options

- Black dial with fluorescent numbers and needle available on request
- Standard Thermoplastic Hose 80 cm (32")  
**Cat. T.I. 130025**
- Also available with Miflex Hose  
**Cat. T.I. 130025/MFX**
- Available with Hose Protector
- Various hose lengths on request starting from 15 cm
- Available also in "Total White Look" (Cover + Hose)  
**Cat. T.I. 130025/W**

### Weight

340 g / 12 oz

### Size

SPG: diam. 50 mm / 2"

Compass: 50 mm / 2"





COMBO 2010 SPG + MDI  
Cat. T.I. 130028



## COMBO 2010 SPG + MDI

### Description and material

2 gauge console:

- Pressure gauge
- Depth gauge in-line

MDI features as **Cat. T.I. 130007**

SPG features as **Cat. T.I. 130012**

The “2010 mini line” console offers an ergonomic sleek style with a low and compact profile and compact profile and an extremely comfortable grip. There are two attachment areas at the top integrated into the design.

### Graduations

Metric: 400 bar - 70 m

Imperial: 5000 psi - 220 ft

- Also available with a double scale
- Increments of 10 bar / 100 psi and 1 m / 5 ft all over the scale

### Options

- Black dial with fluorescent numbers and needle available on request
- Standard Thermoplastic Hose 80 cm (32")  
**Cat. T.I. 130028**
- Also available with Miflex Hose  
**Cat. T.I. 130028/MFX**
- Available with Hose Protector
- Various hose lengths on request starting from 15 cm
- Available also in “Total White Look” (Cover + Hose)  
**Cat. T.I. 130028/W**

### Weight

340 g / 12 oz

### Size

SPG: diam. 50 mm / 2"

MDI: diam. 50 mm / 2"









COMBO 2010 SPG + MDI + 2K COMPASS  
**Cat. T.I. 130029**



## COMBO 2010 SPG + MDI + 2K COMPASS

### Description and material

3 gauge console:

- Pressure gauge
- Depth gauge on the front
- Compass on the back

**Compass** features as **Cat. T.I. 130010**

**MDI** features as **Cat. T.I. 130007**

**SPG** features as **Cat. T.I. 130012**

### Graduations

Metric: 400 bar - 70 m

Imperial: 5000 psi - 220 ft

- Also available with a double scale
- Increments of 10 bar / 100 psi and 1 m / 5 ft all over the scale

### Options

- Black dial with fluorescent numbers and needle available on request
- Standard Thermoplastic Hose 80 cm (32")  
**Cat. T.I. 130029**
- Also available with Miflex Hose  
**Cat. T.I. 130029/MFX**
- Various hose lengths on request starting from 15 cm
- Available with Hose Protector
- Available also in "Total White Look" (Cover + Hose)  
**Cat. T.I. 130029/W**

### Weight

431 g / 15.20 oz

### Size

SPG: diam. 50 mm / 2"

MDI: diam. 50 mm / 2"

Compass: diam 50 mm / 2"





EVO LINE SPG + MDI  
Cat. T.I. 130026/E

## EVO LINE SPG + MDI

### Description and material

With a brand new design, the EVO LINE is the third generation of SPG mini line gauge boot. Thanks to the special processing of the mold, the EVO LINE cover is softer and more comfortable, but at the same time it has a higher grip and a stronger impact resistance.

The EVO LINE is very easy to read and its rounded profile brings out its ergonomic shape and exalts its proficiency

2 gauge console:

- Pressure gauge
- Depth gauge in-line

**MDI** features as **Cat. T.I. 130007**

**SPG** features as **Cat. T.I. 130012**

### Graduations

Metric: 400 bar - 70 m

Imperial: 5000 psi - 220 ft

- Also available with a double scale
- Increments of 10 bar / 100 psi and 1 m / 5 ft all over the scale

### Options

- Black dial with fluorescent numbers & needle available on request
- Standard Thermoplastic Hose 80 cm (32")  
**Cat. T.I. 130026/E**
- Also available with Miflex Hose  
**Cat. T.I. 130026/MFX**
- Available with Hose Protector
- Various hose lengths on request starting from 15 cm

### Weight

340 g / 12 oz

### Size

SPG: diam. 50 mm / 2"

MDI: diam. 50 mm / 2"



EVO LINE SPG + MDI + 2K COMPASS  
Cat. T.I. 130027/E

## EVO LINE SPG + MDI + 2K COMPASS

### Description and material

With a brand new design, the EVO LINE is the third generation of SPG mini line gauge boot. Thanks to the special processing of the mold, the EVO LINE cover is much softer and more comfortable, but at the same time, it has a higher grip and a stronger impact resistance.

The EVO LINE is very easy to read and its rounded profile brings out its ergonomic shape and exalts its proficiency.

3 gauge console:

- Pressure gauge
- Depth gauge on the front
- 2K Compass in-line

**Compass** features as **Cat. T.I. 130010**

**MDI** features as **Cat. T.I. 130007**

**SPG** features as **Cat. T.I. 130012**

### Graduations

Metric: 400 bar - 70 m

Imperial: 5000 psi - 220 ft

- Also available with a double scale
- Increments of 10 bar / 100 psi and 1 m / 5 ft all over the scale

### Options

- Black dial with fluorescent numbers and needle available on request
- Standard Thermoplastic Hose 80 cm (32")  
**Cat. T.I. 130027/E**
- Also available with Miflex Hose  
**Cat. T.I. 130027/MFX**
- Available with Hose Protector
- Various hose lengths on request starting from 15 cm

### Weight

389 g / 13.72 oz

### Size

SPG: diam. 50 mm / 2"

MDI: diam. 50 mm / 2"

Compass: diam. 50 mm / 2"





COMBO SLIM 2 SPG + MDI  
Cat. T.I. 130030

## COMBO SLIM 2 SPG + MDI

### Description and material

2 gauge console:

- Pressure gauge
- Depth gauge in-line

**MDI** features as **T.I. 130040/C**

**SPG** features as **T.I. 130036/S/CPS**

### Graduations

Metric: 300 bar, 360 bar, 400 bar, 450 bar  
50 m, 70 m, 80 m

Imperial: 5000 psi, 5500 psi  
160 ft, 220 ft, 230 ft

- Also available with a double scale
- Increments of 10 bar / 100 psi and 1 m / 5 ft all over the scale

### Options

- Black dial with fluorescent numbers and needle available on request
- Polycarbonate or Tempered Glass
- Thermometer on SPG dial
- Standard Thermoplastic Hose 80 cm (32")

**Cat. T.I. 130030**

- Also available with Miflex Hose

**Cat. T.I. 130030/MFX**

- Available with Hose Protector

- Various hose lengths on request starting from 15 cm

### Weight

577 g / 20.35 oz

### Size

SPG: diam. 52 mm / 2"

MDI: diam. 63 mm / 2.5"



**NEW COMBO SLIM 2**  
**Cat. T.I. 130044**

## NEW COMBO SLIM 2

### Description and material

The brand NEW COMBO SLIM 2 isn't only renewed in design, but at the same time, it's lighter, more ergonomic, and more comfortable than the previous version, without compromising efficiency and grip.

The NEW COMBO SLIM 2 combines our 52 mm (2") PRESSURE GAUGE with our 63 mm (2.5") DEPTH GAUGE, which is fitted with a copper-beryllium diaphragm and offers an easy and fast reading even at low depths. Furthermore, this console is equipped with an adjustable screw for diving in altitude. Top features include vertical reading and shock-absorbing protection.

### Pressure gauge

- Nickel plated brass housing
- Copper beryllium bourdon tube mechanism and silver welding
- Built-in over-pressure relief for safety

### Depth gauge

- Copper Beryllium diaphragm
- 340° scale with wide reading in the first half
- Adjustable screw for diving in altitude
- Maximum depth red indicator easy to reset

### Graduations

Metric: 300 bar, 360 bar, 400 bar, 450 bar  
 50 m, 70 m, 80 m

Imperial: 5000 psi, 5500 psi  
 160 ft, 220 ft, 230 ft

### Options

- Black dial with fluorescent numbers and needle available on request.
- Available with Hose Protector

### Weight

527 g / 18.60 oz

### Size

SPG: diam. 52 mm / 2"  
 MDI: diam. 63 mm / 2.5"





COMBO COMPACT 2 SPG + MDI  
Cat. T.I. 130031

## COMBO COMPACT 2 SPG + MDI

### Description and material

2 gauge console:

- Pressure gauge
- Depth gauge in-line

**MDI** features as **T.I. 130040/C**

**SPG** features as **T.I. 130036/L/CPS**

### Graduations

Metric: 300 bar, 360 bar, 400 bar, 450 bar  
50 m, 70 m, 80 m

Imperial: 5000 psi, 5500 psi  
160 ft, 220 ft, 230 ft

- Also available with a double scale
- Increments of 10 bar / 100 psi and 1 m / 5 ft all over the scale

### Options

- Black dial with fluorescent numbers and needle available on request
- Polycarbonate or Tempered Glass
- Thermometer on SPG dial
- Standard Thermoplastic Hose 80 cm (32")

**Cat. T.I. 130031**

- Also available with Miflex Hose

**Cat. T.I. 130031/MFX**

- Available with Hose Protector
- Various hose lengths on request starting from 15 cm

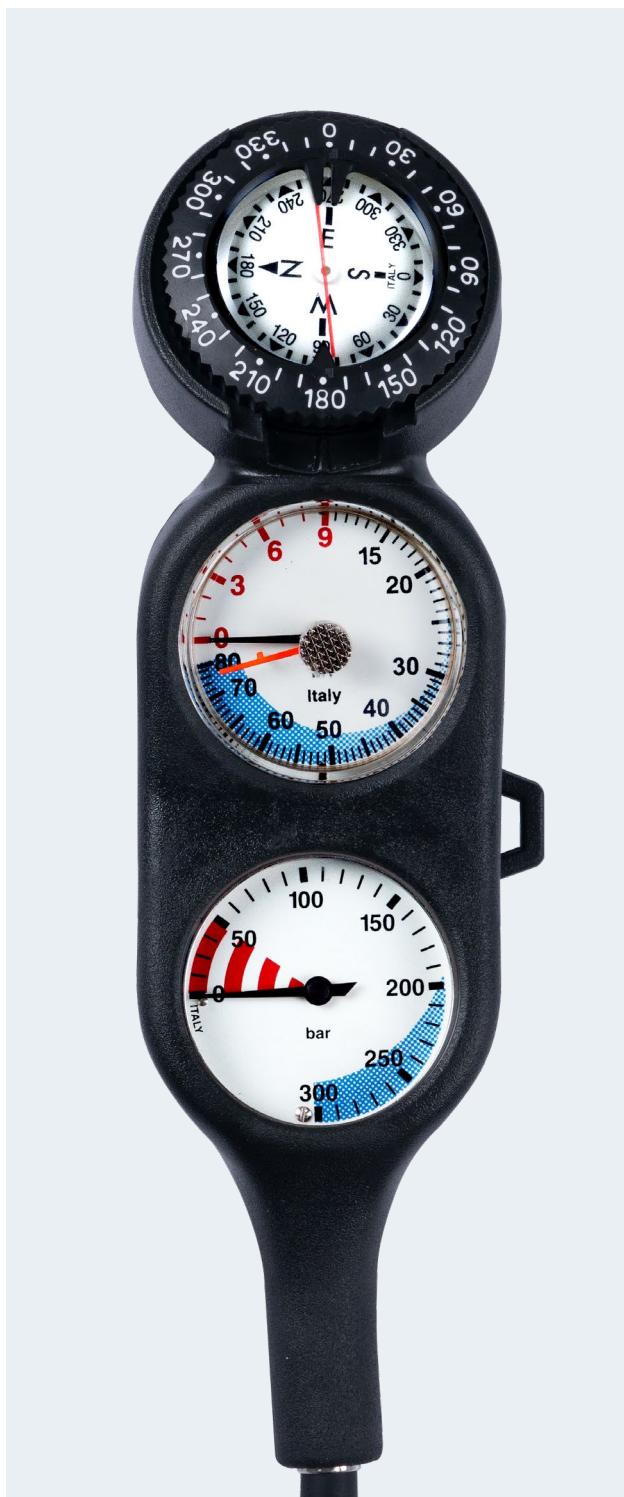
### Weight

586 g / 20.67 oz

### Size

SPG: diam. 63 mm / 2.5"

MDI: diam. 63 mm / 2.5"



COMBO COMPACT 3 SPG + MDI  
Cat. T.I. 130032

## COMBO COMPACT 3 SPG + MDI + STANDARD COMPASS

### Description and material

3 gauge console:

- Pressure gauge
- Depth gauge
- Compass in-line

**COMPASS** features as **T.I. 130009**

**MDI** features as **T.I. 130040/C**

**SPG** features as **T.I. 130036/L/CPS**

### Graduations

Metric: 300 bar, 360 bar, 400 bar, 450 bar  
50 m, 70 m, 80 m

Imperial: 5000 psi, 5500 psi  
160 ft, 220 ft, 230 ft

- Also available with a double scale
- Increments of 10 bar / 100 psi and 1 m / 5 ft all over the scale

### Options

- Black dial with fluorescent numbers and needle available on request
- Polycarbonate or Tempered Glass
- Thermometer on SPG dial
- Standard Thermoplastic Hose 80 cm (32")

**Cat. T.I. 130032**

- Also available with Miflex Hose

**Cat. T.I. 130032/MFX**

- Available with Hose Protector
- Various hose lengths on request starting from 15 cm

### Weight

682 g / 24.04 oz

### Size

SPG: diam. 63 mm / 2.5"

MDI: diam. 63 mm / 2.5"

Compass: diam. 60 mm / 2.3"





COMBO 2006 SPG + MDI  
Cat. T.I. 130033

## COMBO 2006 SPG + MDI

### Description and material

2 gauge console:

- Pressure gauge
- Depth gauge in-line

**MDI** features as **T.I. 130040/C**

**SPG** features as **T.I. 130036/L/CPS**

### Graduations

Metric: 300 bar, 360 bar, 400 bar, 450 bar  
50 m, 70 m, 80 m

Imperial: 5000 psi, 5500 psi  
160 ft, 220 ft, 230 ft

- Also available with a double scale
- Increments of 10 bar / 100 psi and 1 m / 5 ft all over the scale

### Options

- Black dial with fluorescent numbers and needle available on request
- Polycarbonate or Tempered Glass
- Thermometer on SPG dial
- Standard Thermoplastic Hose 80 cm (32")

**Cat. T.I.130033**

- Also available with Miflex Hose

**Cat. T.I. 130033/MFX**

- Available with Hose Protector
- Various hose lengths on request starting from 15 cm

### Weight

580 g / 24.44 oz

### Size

SPG: diam. 63 mm / 2.5"

MDI: diam. 63 mm / 2.5"



## COMBO 2006 SPG + MDI + STANDARD COMPASS ON THE BACK

### Description and material

3 gauge console:

- Pressure gauge
- Depth gauge on the front
- Compass on the back

**COMPASS** features as **T.I. 130009**

**MDI** features as **T.I. 130040/C**

**SPG** features as **T.I. 130036/L/CPS**

### Graduations

Metric: 300 bar, 360 bar, 400 bar, 450 bar  
50 m, 70 m, 80 m

Imperial: 5000 psi, 5500 psi  
160 ft, 220 ft, 230 ft

- Also available with a double scale
- Increments of 10 bar / 100 psi and 1 m / 5 ft all over the scale

### Options

- Black dial with fluorescent numbers and needle available on request
- Polycarbonate or Tempered Glass
- Thermometer on SPG dial
- Standard Thermoplastic Hose 80 cm (32")

**Cat. T.I.130034**

- Also available with Miflex Hose

**Cat. T.I. 130034/MFX**

- Available with Hose Protector
- Various hose lengths on request starting from 15 cm



COMBO 2006 SPG + MDI + STANDARD  
COMPASS (on the back)

**Cat. T.I. 130034**

### Weight

720 g / 25.39 oz

### Size

SPG: diam. 63 mm / 2.5"

MDI: diam. 63 mm / 2.5"

Compass: diam. 60 mm / 2.3"





COMBO 2006 SPG + STANDARD COMPASS

**Cat. T.I. 130035**

## COMBO 2006 SPG + STANDARD COMPASS

### Description and material

2 gauge console:

- Pressure gauge
- Standard compass in-line

**COMPASS** features as **T.I. 130009**

**SPG** features as **T.I. 130036/L/CPS**

### Graduations

Metric: 300 bar, 360 bar, 400 bar, 450 bar

Imperial: 5000 psi, 5500 psi

- Also available with a double scale.
- Increments of 10 bar / 100 psi and 1 m / 5 ft all over the scale

### Options

- Black dial with fluorescent numbers and needle available on request
- Polycarbonate or Tempered Glass
- Thermometer on SPG dial
- Standard Thermoplastic Hose 80 cm (32")

**Cat. T.I.130035**

- Also available with Miflex Hose

**Cat. T.I. 130035/MFX**

- Available with Hose Protector
- Various hose lengths on request starting from 15 cm

### Weight

510 g / 18 oz

### Size

SPG: diam. 63 mm / 2.5"

Compass: diam. 60 mm / 2.3"



COMBO 2006 SPG + PRO COMPASS  
Cat. T.I. 130043

## COMBO 2006 SPG + PRO COMPASS

### Description and material

2 gauge console:

- Pressure gauge
- PRO compass in-line

**COMPASS** features as T.I. 130001

**SPG** features as T.I. 130036/L/CPS

### Graduations

Metric: 300 bar, 360 bar, 400 bar, 450 bar

Imperial: 5000 psi, 5500 psi

- Also available with a double scale
- Increments of 10 bar / 100 psi and 1 m / 5 ft all over the scale

### Options

- Black dial with fluorescent numbers and needle available on request
- Polycarbonate or Tempered Glass
- Thermometer on SPG dial
- Black or Gray ring for PRO Compass
- Standard Thermoplastic Hose 80 cm (32")

**Cat. T.I. 130043**

- Also available with Miflex Hose

**Cat. T.I. 130043/MFX**

- Available with Hose Protector
- Various hose lengths on request starting from 15 cm

### Weight

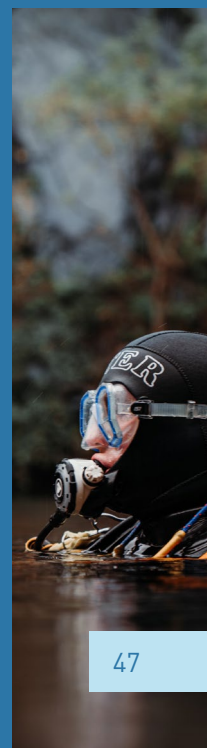
524 g / 18.50 oz

### Size

SPG: diam. 63 mm / 2.5"

Compass: diam. 60 mm / 2.3"











# Submersible compasses

Submersible compasses are still in trend and are one of our top-selling products. In a world where everything spins around electronic navigation, we still champion human-centric navigation tools.

Termo Industria compasses are made with mechanical processes and maps printed where underwater navigation is still reliable.

Our compasses are water-resistant, robust, and easy to use and they can glow in the dark (with no batteries required).

All our compasses are Made in Italy.

A piece of kit for both recreational and professional divers to guarantee top results when it comes to underwater orienteering.





STANDARD COMPASS - Capsule only  
Cat. T.I. 130009

## STANDARD COMPASS Capsule only

### Description and material

- Oil filled
- Top/side view through to a special reading window
- Very fast response thanks to its 2 magnets
- Luminous card with 10° gradation
- Numbers molded completely through the bezel ring that cannot be rubbed off

### Options

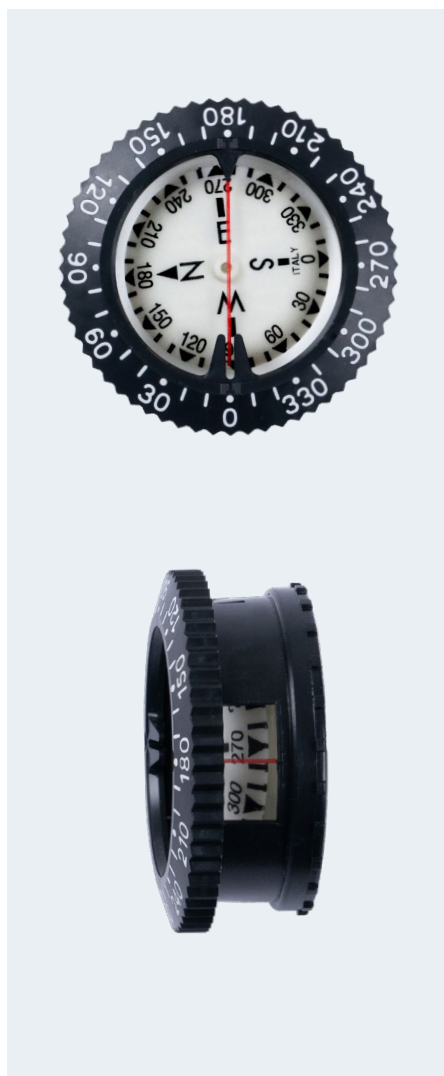
- Northern hemisphere
- Southern hemisphere

### Weight

40 g / 1.41 oz

### Size

Diam. 60 mm / 2.3"







STANDARD COMPASS + Wrist model  
Cat. T.I. 130008

## STANDARD COMPASS Wrist model

### Description and material

Compass features as

Standard Compass - Capsule T.I. 130009

- Wearable on the wrist with an ergonomic and strong buckle strap

### Options

- Northern Hemisphere
- Southern Hemisphere

### Weight

92 g / 3.25 oz

### Size

Diam. 60 mm / 2.3"





STANDARD COMPASS + Holster  
Cat. T.I. 130008/H

## STANDARD COMPASS + Holster

### Description and material

Compass features as:

Standard Compass - Capsule T.I. 130009

The perfect choice for mounting the compass on our Combo Consoles.

### Options

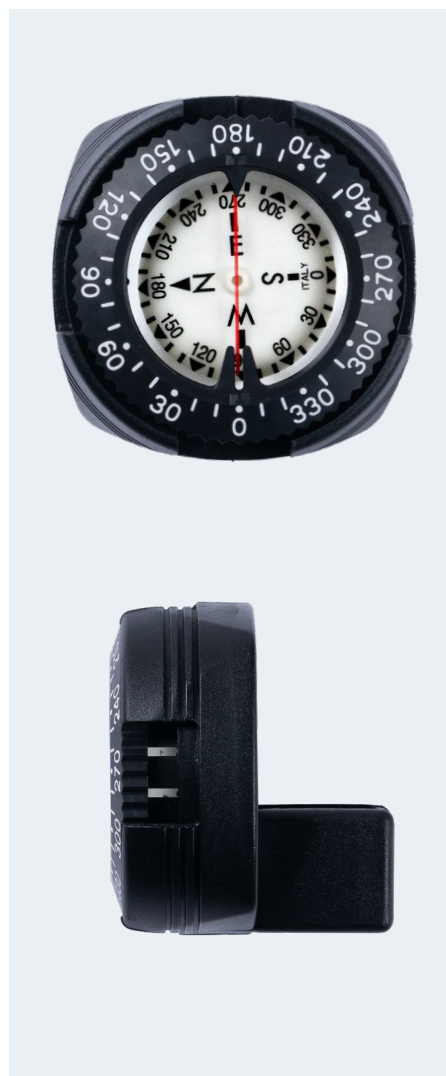
- Northern Hemisphere
- Southern Hemisphere

### Weight

98 g / 3.46 oz

### Size

Diam. 60 mm / 2.3"







STANDARD COMPASS - Bungee cord model  
Cat. T.I. 130008/B

## STANDARD COMPASS Bungee cord model

### Description and material

Compass features as:

Standard Compass - Capsule T.I. 130009

- Bungee cord wrist mount
- Easy to wear
- Fits the body during depth-compensating which means that as the diver goes deep and pressure increases there might be body-composition changes due to this increased pressure. But because the strap has a bungee cord this compass adapts perfectly at any depth.

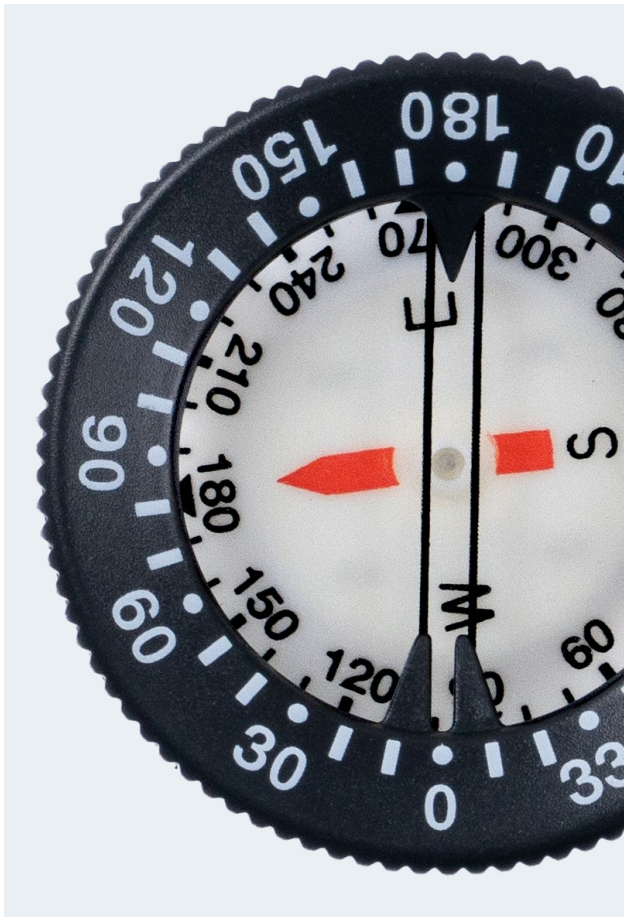
### Weight

72 g / 2.54 oz

### Size

Diam. 60 mm / 2.3"





## 2K COMPASS Capsule only

### Description and material

- Oil filled
- Top/side view through to a special reading window
- Very fast response thanks to its 2 magnets
- Luminous card with 10° gradation
- Numbers molded completely through the bezel ring that cannot be rubbed off

### Options

- Northern Hemisphere
- Southern Hemisphere
- White ring on request

### Weight

33 g / 1.16 oz

### Size

Diam. 49 mm / 1.9"



2K COMPASS - Capsule only  
Cat. T.I. 130011

2K COMPASS - White ring  
Cat. T.I. 130011/W







2K COMPASS - Wrist model  
Cat. T.I. 130010

## 2K COMPASS Wrist model

### Description and material

Compass features as:

2K Compass - Capsule T.I. 130011

It's wearable on the wrist with an ergonomic and strong buckle strap.

### Options

- Northern hemisphere
- Southern hemisphere
- White ring on request

### Weight

84 g / 2.96 oz

### Size

Diam. 49 mm / 1.9"









# Professional Scuba Diving Compasses

Diving Pro Compasses are our new, high-quality liquid-filled compasses, specifically designed for professional use. They are available in Wrist model or in the Bungee Cord version, and they features:

Exceptional tilt - allowing the compass to be held at an angle of up to 30° and still responding quickly and accurately.

High strength magnets for fast action.

Filled with liquid silicone.

Firm-grip ratcheting bezel.

Easy to read lubber line.

Top or side reading.

Northern hemisphere zone or southern hemisphere calibration. Bold numbers are designed for ease of reading.

It also features a luminescent floating card and is manufactured in Italy.

Pro scuba diving compasses are our top-quality product for divers who needs only the best in the diving market.





PRO COMPASS - Capsule only  
Cat. T.I. 130001

## PRO COMPASS Capsule only

### Description and material

- Luminous card with 5° gradation
- Tilt allows the compass to be held at an angle of up to 30° and still respond quickly and accurately
- Oil filled
- Top/side view through to a special reading window
- Very fast response thanks to its 2 magnets
- Numbers molded completely through the bezel ring that cannot be rubbed off

### Options

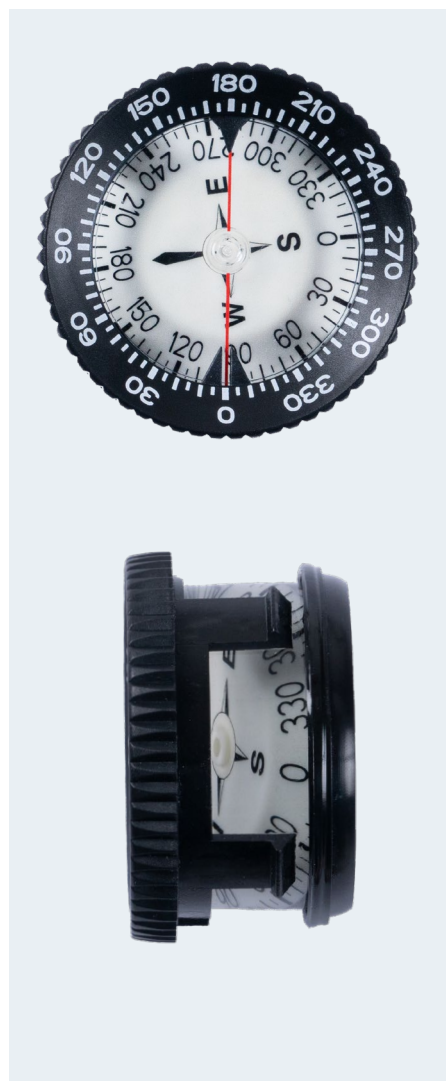
- Northern Hemisphere
- Southern Hemisphere

### Weight

57 g / 2 oz

### Size

Diam. 56 mm / 2.2"







PRO COMPASS - Wrist model  
Cat. T.I. 130002

## PRO COMPASS Wrist model

### Description and material

Compass features as:

PRO Compass - Capsule T.I. 130001

It's wearable on the wrist with an ergonomic and strong buckle strap.

### Options

- Northern hemisphere
- Southern hemisphere

### Weight

115 g / 4.06 oz

### Size

Diam. 56 mm / 2.2"





PRO COMPASS - Bungee Model  
Cat. T.I. 130003

## PRO COMPASS Bungee model

### Description and material

Compass features as:

PRO Compass - Capsule T.I. 130001

- Bungee cord wrist mount
- Easy to wear
- Fits the body during depth-compensating which means that as the diver goes deep and pressure increases there might be body composition changes due to this increased pressure. But because the strap is equipped with a bungee cord this compass adapts perfectly at any depth.

### Options

- Northern Hemisphere
- Southern Hemisphere

### Weight

103 g / 3.63 oz

### Size

Diam. 56 mm / 2.2"







PRO COMPASS - Bungee Model  
Gray ring  
Cat. T.I. 130003/GRAY

## PRO COMPASS Bungee model Gray ring

### Description and material

Compass features as:

PRO Compass - Capsule T.I. 130001

- Bungee cord wrist mount
- Easy to wear
- Fits the body during depth-compensating which means that as the diver goes deep and pressure increases there might be body composition changes due to this increased pressure. But because the strap is equipped with a bungee cord this compass adapts perfectly at any depth.

### Options

- Northern hemisphere
- Southern hemisphere

### Weight

103 g / 3.63 oz

### Size

Diam. 56 mm / 2.2"







## Spare parts

Spare parts are a very important part of what we can offer to our customers.

In this section, you will find a variety of tools, and spare fittings, including dials and needles that can help you to fully customize your diving instruments.

Be ready to face any inconvenience by keeping spare parts, so you can keep enjoying your diving adventures even in the most challenging situations.



We have plenty of options to make your piece of instruments truly bespoke and tailored to your personal needs.





SPG 2K:  
Cat. T.I. 130042/2K

## SINGLE COVERS

### Description and material

We feature a vast selection of single covers, with different colours and for different manometers.

### Options

Suitable for SPG 2K Line (Diam. 50 mm/2"):

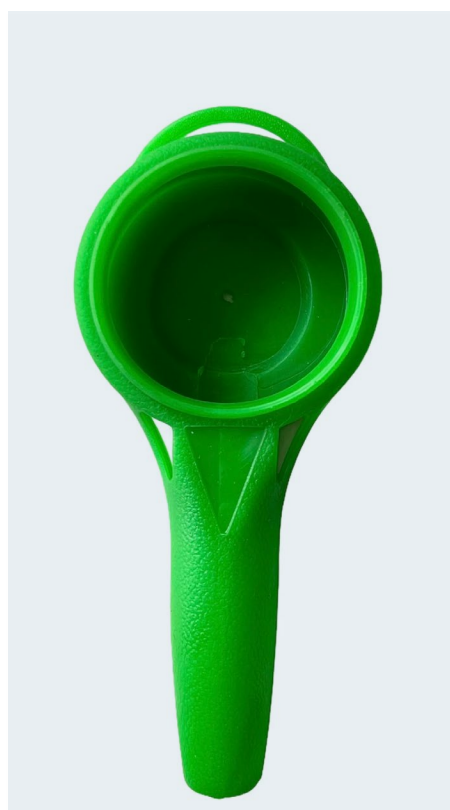
- 2K Cover: **Cat. T.I. 130042/2K**
- 2K Green Cover: **Cat. T.I. 130042/2K/GR**
- 2010 Cover: **Cat. T.I. 130042/2010**
- EVO Cover: **Cat. T.I. 130042/EVO**

Suitable for SPG 52 (Diam. 52 mm/2"):

- CE Cover: **Cat. T.I. 130042/CE/S**
- CE Green Cover: **Cat. T.I. 130042/CE/GR**

Suitable for SPG 63 (Diam. 63 mm/2.5"):

- CE Cover: **Cat. T.I. 130042/CE/L**

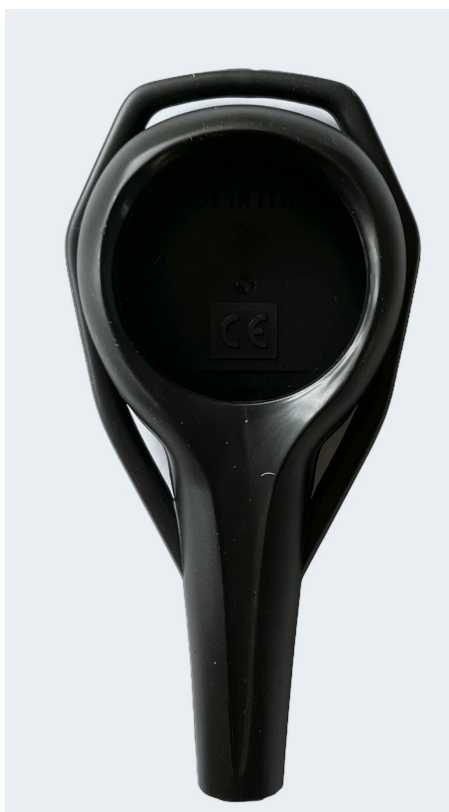


SPG 2K (green):  
Cat. T.I. 130042/2K/GR



SPG 2010:  
Cat. T.I. 130042/2010





SPG EVO:  
Cat. T.I. 130042/EVO



SPG 52 (green):  
Cat. T.I. 130042/CE/GR



SPG 52:  
Cat. T.I. 130042/CE/S



SPG 63:  
Cat. T.I. 130042/CE/L



H.P. HOSE - Standard length  
**Cat. T.I. 130016/01**

## H.P. HOSE Standard length

### Description and material

Standard thermoplastic High Pressure hose.

- Max. working pressure: 300 bar (4350 psi)
- Minimum burst pressure 1200 bar (17400 psi)

### Options

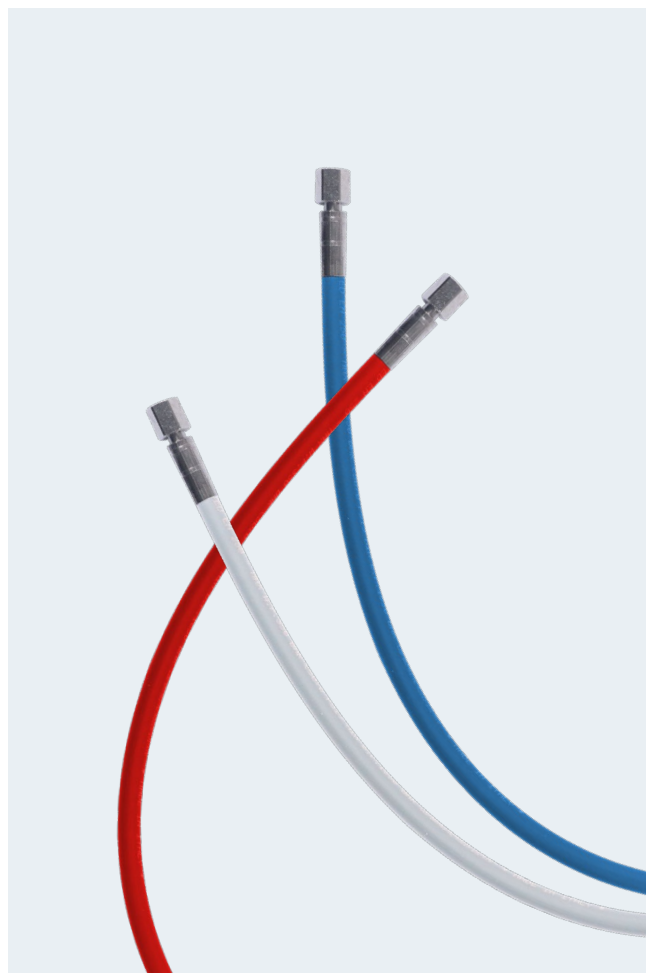
- Standard hose length 80 cm (32")  
**Cat. T.I. 130016/01**
- Various hose lengths on request starting from 15 cm
- Hose colours available on request:
  - **Cat. T.I. 130016/WHITE**
  - **Cat. T.I. 130016/RED**
  - **Cat. T.I. 130016/BLUE**

### Length

800 mm / 32"

### Size

Diam. 10,5 mm / 0.04"







H.P. HOSE - Short length  
Cat. T.I. 130017/01

## H.P. HOSE Short length

### Description and material

Short thermoplastic High Pressure hose.

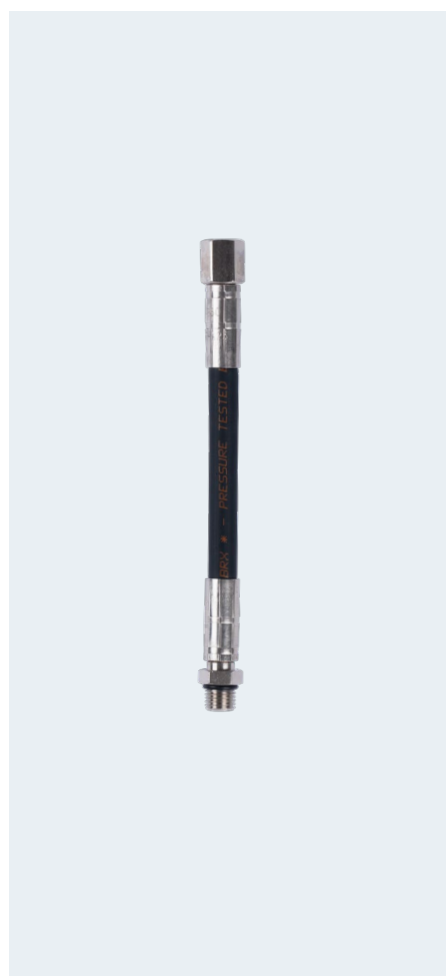
- Max. working pressure: 300 bar (4350 psi)
- Minimum burst pressure 1200 bar (17400 psi)

### Options

- Hose length 150 mm (6").  
**Cat. T.I. 130017/01**
- Hose length 200 mm (7.8").  
**Cat. T.I. 130017/02**

### Size

Diam. 10,5 mm / 0.41"





L.P. HOSE  
Cat. T.I. 130023



B.C. HOSE  
Cat. T.I. 130024

## L.P. HOSE & B.C. HOSE

### Description and material

Standard thermoplastic low pressure hose.

- Max. working pressure: 35 bar (507 psi)
- Minimum burst pressure: 150 bar (2175 psi)

### Options

Standard hose length 80 cm (32")

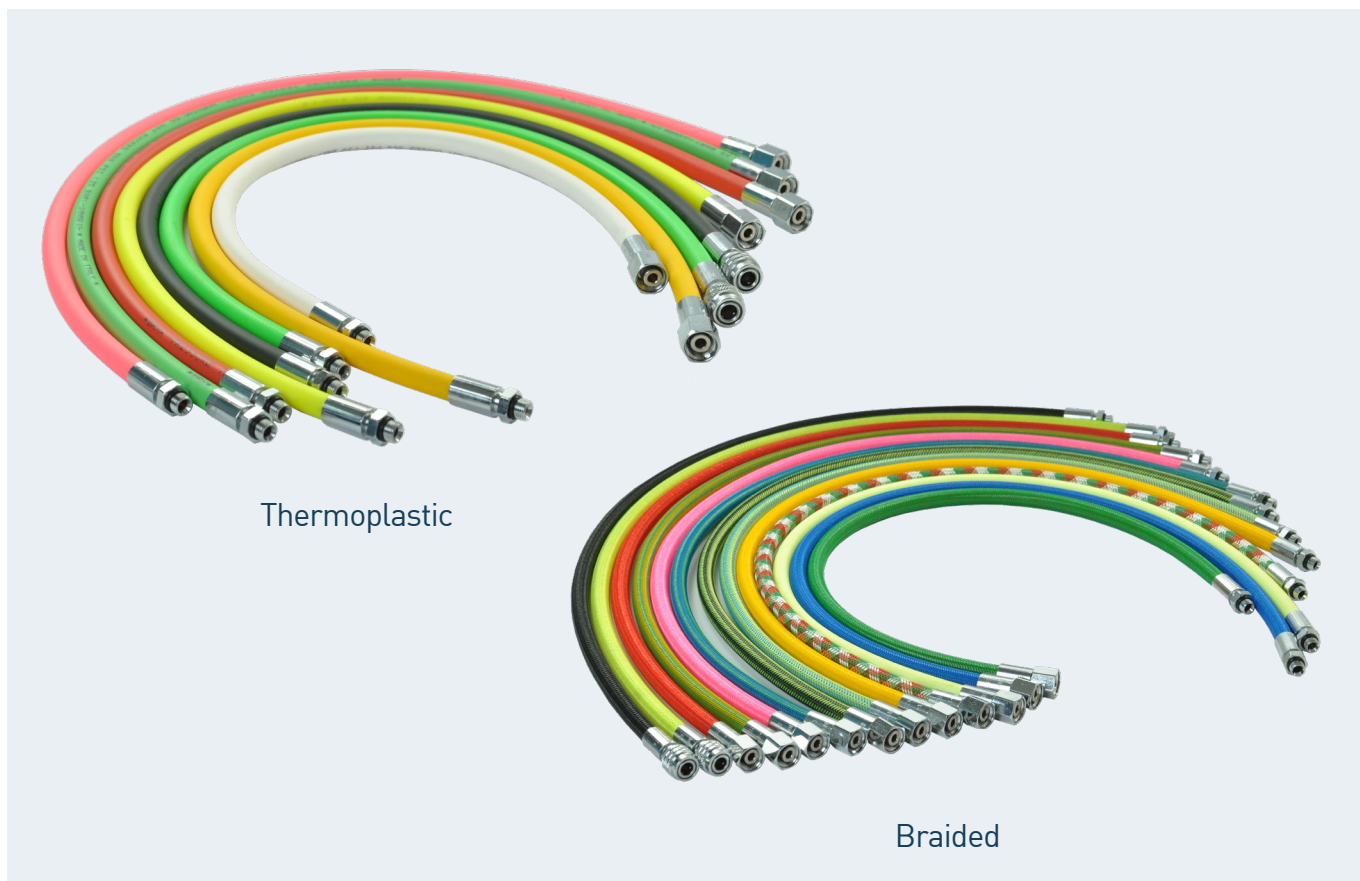
- LP Hose **Cat. T.I. 130023**
- BC Hose **Cat. T.I. 130024**
- Various hose lengths on request starting from 15 cm
- Also available in different colors (thermoplastic or braided)

### Length

800 mm / 32"

### Size

Diam. 12 mm / 0.47"



Thermoplastic

Braided





MIFLEX H.P. HOSE  
Cat. T.I. 130016/MFX

## MIFLEX H.P. HOSE

### Description and material

Miflex HP hoses are 35% thinner (7.8 mm) and about half the weight of traditional thermoplastic hoses. These quality hoses use electroless nickel-plated brass fittings on both ends. They are approved for use with up to 40% oxygen.

Standard fittings: M 7/16" UNF, F 7/16" UNF

- Max. working pressure: 300 bar (4350 psi)
- Minimum burst pressure 1200 bar (17400 psi)

### Options

- Various hose lengths on request starting from 15 cm

### Length

800 mm / 32"

### Size

Diam. 7,5 mm / 0.30"





HOSE PROTECTOR  
Cat. T.I. 130018

## HOSE PROTECTOR

### Description and material

Give your H.P. Hose an extended life with our Hose Protector that helps to prevent strain and damage to hose and fittings.

### Length

82,50 mm / 3.24"



SWIVEL VITON O-RING  
Cat. T.I. 130021

## SWIVEL WITH VITON O-RING

### Description and material

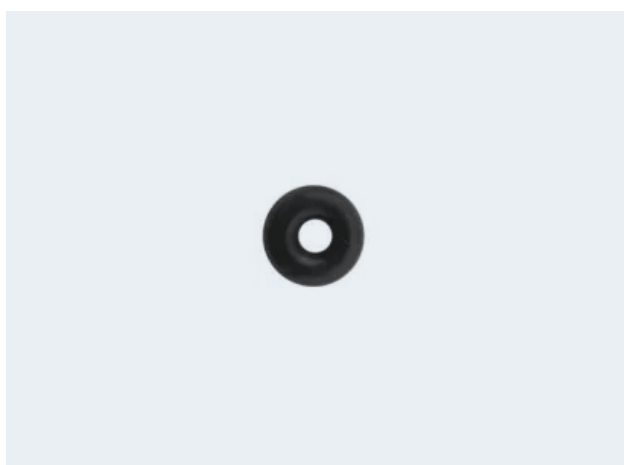
A small essential accessory made out of brass for connecting the HP hose to the Pressure Gauge. It comes with a Black Viton O-Ring.

### Length

18 mm / 0.7"

### Size

Diam. 4,25 mm / 0.16"



VITON O-RING FOR OXYGEN SWIVEL  
Cat. T.I. 130022

## VITON O-RING For oxygen swivel

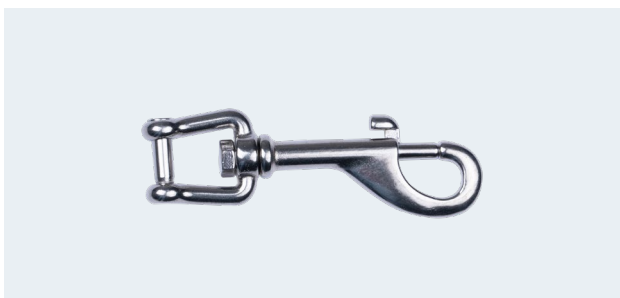
### Description and material

This Viton O-Ring mounts on the swivel and it's an important replacement part.

### Size

4,25 mm / 0.16"





Stainless steel shackle: **Cat. T.I. 130005**

## STAINLESS STEEL SHACKLE

### Description and material

Stainless steel shackle **as seen on page 21.**

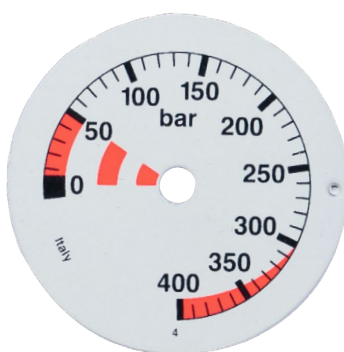
### Weight

73,5 g / 2.66 oz

## DIALS

### Description and material

Here we feature some of our SPG dials.  
We offer a vast selection of bespoke dials,  
that can be fully personalized.  
We can fully customize the design  
by including your logo too.



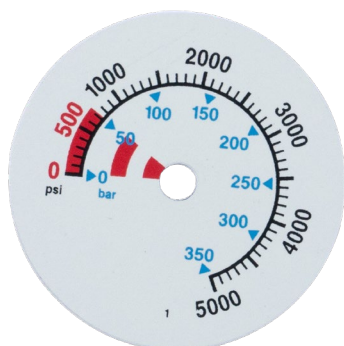
**DIAL 01**

Diam. 50 mm / 2"



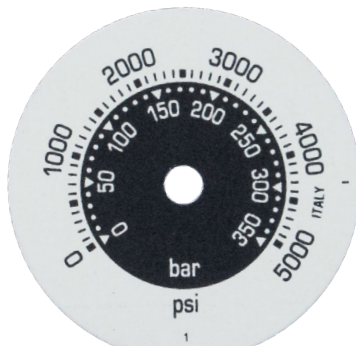
**DIAL 02**

Diam. 50 mm / 2"



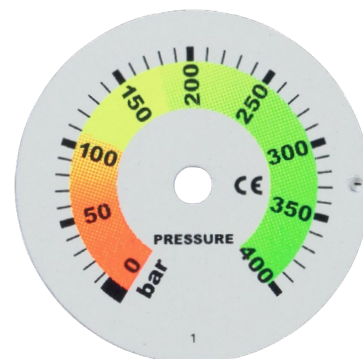
**DIAL 03**

Diam. 50 mm / 2"



**DIAL 04**

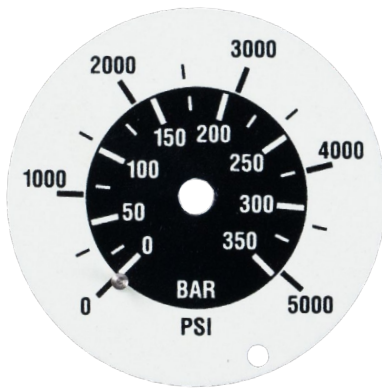
Diam. 50 mm / 2"



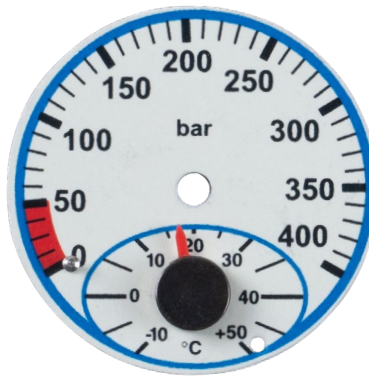
**DIAL 05**

Diam. 50 mm / 2"





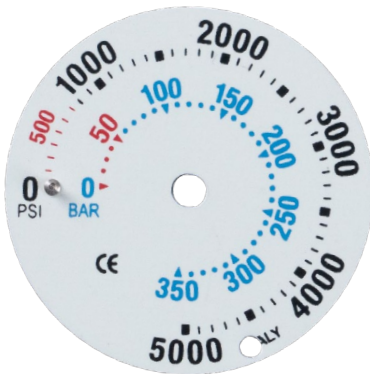
**DIAL 06**  
Diam. 52 mm / 2"



**DIAL 07**  
Diam. 52 mm / 2"



**DIAL 08**  
Diam. 52 mm / 2"



**DIAL 09**  
Diam. 52 mm / 2"



**DIAL 10**  
Diam. 63 mm / 2.5"



**DIAL 11**  
Diam. 63 mm / 2.5"



**DIAL 12**  
Diam. 63 mm / 2.5"



**DIAL 13**  
Diam. 63 mm / 2.5"



**DIAL 14**  
Diam. 63 mm / 2.5"



**2K LINE**  
Black with red point  
Diam. 50 mm / 2"



**2K LINE**  
Red  
Diam. 50 mm / 2"



**2K LINE**  
Black  
Diam. 50 mm / 2"



**2K LINE**  
Luminous  
Diam. 50 mm / 2"



**SPG 52**  
Black  
Diam. 52 mm / 2"



**SPG 52**  
Red  
Diam. 52 mm / 2"



**SPG 52**  
Luminous  
Diam. 52 mm / 2"



**SPG 63**  
Black  
Diam. 63 mm / 2.5"



**SPG 63**  
Luminous  
Diam. 63 mm / 2.5"





## NEEDLES

### Description and material

We offer a vast selection of needle designs, featuring different shapes, sizes, and colours.

### Size

Different dimensions depending on the design.

TERMO  INDUSTRIA



**TERMO INDUSTRIA s.r.l.**

Via Riva di Trento, 23  
20139 Milan - Italy

Phone: **+39 02 57 30 00 26**

P.IVA 00753800150

For general informations about  
products, tech or orders:  
**[info@termoindustria.it](mailto:info@termoindustria.it)**

For account, invoice, shipment:  
**[account@termoindustria.it](mailto:account@termoindustria.it)**

